

**FENNE** <sup>®</sup>  
INDUSTRIAL



**Attachments**

**Converting  
power to  
productivity.**

WE ARE FENNEX INDUSTRIAL

# A family-owned commitment to provide innovative products.



## SOLUTIONS BACKED BY OLD FASHIONED CUSTOMER SUPPORT

Family-owned businesses have something special. A core value that larger corporations cannot duplicate. When you have three generations of a family involved in a business, there's a genuine desire to look out for those people who work in, for and with the business. And there's a will for the business and our customers to collectively succeed. Since 1963 three generations of our family have given their best to ensure that Fennex Industrial's reputation as a quality manufacturer, supplier and employer is entrenched with those we value most - our people, our customers and our suppliers.



100% FAMILY OWNED



VIP CUSTOMER SUPPORT



24 HOUR HOTLINE



QUALITY PRODUCTS



# At Fennex Industrial we understand that each project has its own unique requirements and challenges.

Central to our approach is our strategic partnerships with world-leading brands that share our vision for innovation and excellence. With a keen eye for industry trends and customer needs, Fennex ensures that its product lineup remains at the forefront of technological advancements, empowering its clients to stay ahead of the curve.



ALL FENNEX INDUSTRIAL ATTACHMENTS INCLUDE THE FOLLOWING FOR YOUR EXCAVATOR:

Hydraulic hose connection



Custom hitch frame

# Our brands

Fennex Industrial has partnered with leading global supply brands and with our knowledgeable sales team, brings you a comprehensive solution that will without a doubt increase the output of your machinery and enhance your customers' experience.

## TREVIENNE

World renowned brand in the demolition, recycling and construction industries, specialising in the design and manufacturing of high-quality attachments and equipment for excavators.



Renowned industry leader, offering cutting-edge material handling solutions to a diverse range of sectors worldwide, from recycling and waste to mining and forestry.



The leading brand revolutionising the hydraulic quick coupler industry. Their innovative solutions enable seamless and efficient attachment changes for construction machinery.



The global leading manufacturer of hydraulic generators, power washers and compressors. The technology increases the productivity of mobile machinery by adding new functions with hydraulic equipment.



With over 35 years of industry expertise, specialising in magnet solutions for the demolition and recycling sectors. Their tailored solutions excel in handling and sorting ferrous materials.



# Contents

Primary Crushers	<b>6-7</b>
Universal Processors	<b>8-9</b>
Rotating Pulverizers	<b>10-11</b>
Secondary Pulverizers	<b>12-13</b>
Mobile Shears	<b>14-15</b>
Sorting Grabs	<b>16-17</b>
Orange Peel Grapples	<b>18-19</b>
Screening Buckets	<b>20-21</b>
Hydraulic Magnets	<b>22-23</b>
Magnet Generators	<b>24-25</b>
Electro Magnets	<b>26-27</b>
Automatic Quick Couplers	<b>28-29</b>
Tiltrotators	<b>30-31</b>
Street Washers	<b>32-33</b>
Submersible Pumps	<b>34-35</b>
Other Products	<b>36-37</b>

# Ultimate hydraulic crushing power

## OVERVIEW

The ultimate hydraulic crusher for primary demolition tasks. Undoubtedly, **Trevi Benne** primary crushers are the fastest, most precise and powerful attachments available for operators looking to increase their productivity and efficiency when dismantling structures.



Heavy duty continuous  
360° rotation assembly

Fast cycle times with  
speed valves

Durable Hardox®  
construction

Large, heavy-duty  
jaws constructed  
using Hardox® HiTuf

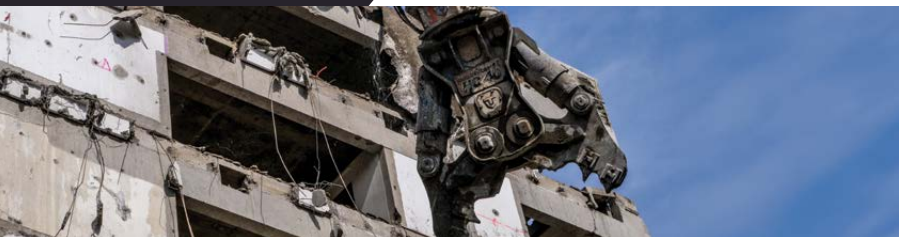
Unmatched  
crushing power  
at the tip

Protection sleeve  
on hydraulic  
cylinders

Dual oversized  
hydraulic  
cylinders

Reversible  
steel cutting  
blades

Hardwearing  
bolt-on teeth



MODEL	EXCAVATOR SIZE	WEIGHT	JAW OPENING	TIP FORCE
	ton	kg	mm	ton
HC02	2 - 3	250	290	24
HC03	4 - 5	315	380	32
HC05ND	6 - 9	560	500	26
HC10ND	10 - 15	1,030	700	41
HC15ND	16 - 21	1,790	880	69
HC20ND	22 - 26	2,050	690	80
HC25ND	27 - 33	2,790	1,110	93
HC33	33 - 39	3,120	1,300	101
HC40	40 - 49	3,770	1,370	112
HC50	50 - 65	5,150	1,505	136
HC60	66 - 85	6,490	1,750	156
HC80	86 - 105	8,855	1,850	206
HC100	86 - 130	11,535	2,060	236
HC120	86 - 150	12,085	2,300	272
HC140	120 - 180	14,300	2,860	390
HC250	250 - 300	28,700	3,100	465

# The master of all tasks

## OVERVIEW

Known as the master of all tasks, the **Trevi Benne** universal processors are a versatile piece of kit. Choose from six different sets of jaws to perfectly match the task at hand whether it be cutting steel or crushing concrete.





Durable Hardox® construction

Protection sleeve fitted on hydraulic cylinders

Dual oversized hydraulic cylinders

Interchangeable jaw system

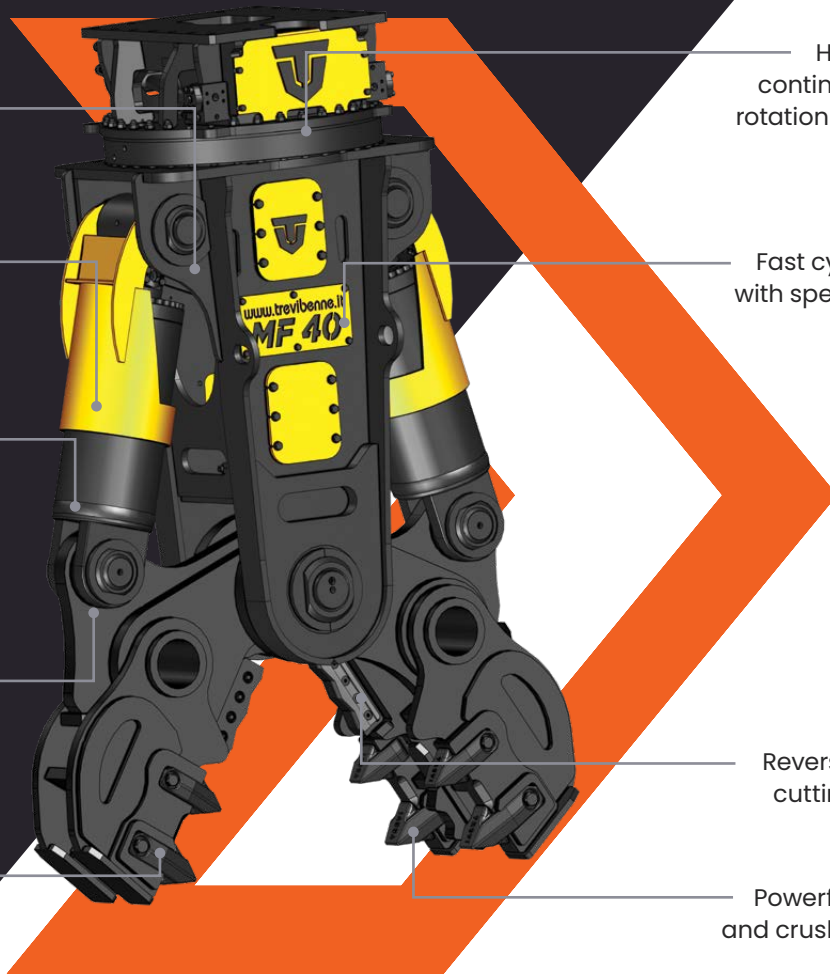
Hardwearing bolt-on teeth

Heavy duty continuous 360° rotation assembly

Fast cycle times with speed valves

Reversible steel cutting blades

Powerful cutting and crushing force



## Jaw Options



**CRUSHER JAWS**



**PULVERIZER JAWS**



**COMBI-CUTTER JAWS**



**SHEAR JAWS**

MODEL	JAW STYLE	EXCAVATOR SIZE	WEIGHT	JAW OPENING	TIP FORCE
		mm	kg	mm	ton
<b>MF05</b>	Crusher	6 - 11	690	570	49
<b>MF05</b>	Shear	6 - 11	715	225	35
<b>MF15</b>	Crusher	15 - 22	1,300	690	62
<b>MF15</b>	Shear	15 - 22	1,350	360	62
<b>MF18</b>	Crusher	18 - 23	1,970	780	68
<b>MF18</b>	Shear	18 - 23	1,860	475	80
<b>MF25</b>	Crusher	24 - 37	2,340	940	75
<b>MF25</b>	Shear	24 - 37	2,300	570	87
<b>MF40</b>	Crusher	38 - 54	4,040	1,080	118
<b>MF40</b>	Shear	38 - 54	3,700	630	112
<b>MF60</b>	Crusher	55 - 75	5,330	1,350	138
<b>MF60</b>	Shear	55 - 75	5,170	740	127

# Powerful and productive

## OVERVIEW

The unique design of the **Trevi Benne** rotating pulverizer allows operators to deal with both the primary and secondary demolition tasks with a single piece of equipment. Accurate and fast as a crusher, and powerful and productive with the jaws of a demolisher. With jaws designed to crush concrete as effectively as possible and a heavy-duty Hardox® construction, these pulverizers are ideal for operators looking to increase their productivity and efficiency when dismantling structures.



Heavy duty continuous 360° rotation assembly

Fast cycle times with speed valves

Durable Hardox® construction

Reversible steel cutting blades

Open jaw design for efficient work

Reversed hydraulic cylinder for maximum protection

Large jaw opening increases productivity

Sorting spikes for material selection

Unmatched crushing power

Hardwearing bolt-on teeth



MODEL	EXCAVATOR SIZE	WEIGHT	JAW OPENING	TIP FORCE
	ton	kg	mm	ton
FR05	6 - 9	555	560	35
FR10	9 - 12	1,035	655	44
FR13	13 - 15	1,355	700	60
FR18	16 - 21	1,990	780	78
FR23	22 - 28	2,550	880	98
FR28	29 - 35	3,200	930	121
FR38	36 - 50	3,810	1,000	132
FR55	51 - 50	5,850	1,120	152
FR75	71 - 90	8,100	1,440	201
FR120	91 - 140	13,100	1,660	263
FR200	100 - 200	22,300	1,900	464
FR250	100 - 250	24,640	2,050	483

# The adaptable groundwork solution

## OVERVIEW

Designed for high efficiency secondary demolition and concrete recycling, the **Trevi Benne** secondary pulverizer offers unmatched power and large jaw capacities. An optimised design to pick up, crush, and separate rebar from concrete faster than ever before thanks to high-tip forces, a large jaw, and fast cycle times. The unique shape makes it extremely versatile for use on the ground, facilitating demolition of walls and vertical cement structures, pavement, and concrete slabs.



Fast cycle times with speed valves

Reversed hydraulic cylinder for maximum protection

Durable Hardox® construction

Serrated steel cutting blades

Heavy duty, wide jaw



Exceptional crushing force

Open jaw design for efficient work

Bolt-on teeth for reduced downtime and costs

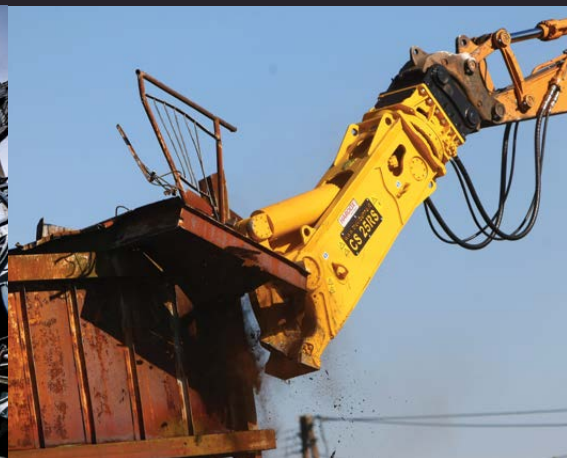


MODEL	EXCAVATOR SIZE	WEIGHT	JAW OPENING	TIP FORCE
	ton	kg	mm	ton
<b>F04</b>	5 - 8	460	465	33
<b>F07RD</b>	7 - 10	680	530	45
<b>F12RD</b>	13 - 17	1,250	730	80
<b>F18RD</b>	18 - 25	1,990	825	101
<b>F25RD</b>	25 - 32	2,650	870	122
<b>F230RD</b>	33 - 45	3,070	950	131
<b>F45RD</b>	45 - 65	4,490	1,130	140
<b>F70RD</b>	65 - 85	6,430	1,250	194

# Your metal cutting shortcut

## OVERVIEW

The **Trevi Benne** range of shears is designed for modern industrial demolition sites and for professionals in the recycling of scrap and ferrous materials. They are an ideal attachment for excavators in cutting and dismantling metal buildings and structures, beams, tanks, pipes and more. With a wide range suiting excavators from 1.5 to 310 tons, these shears are designed to outperform and outlast.



Superior protection of hydraulic cylinder

Fast cycle times with speed valves

Reinforced thrust bearing prevents jamming

Maximised cutting life

Durable Hardox® design with jaw constructed using Hardox® HiTuf

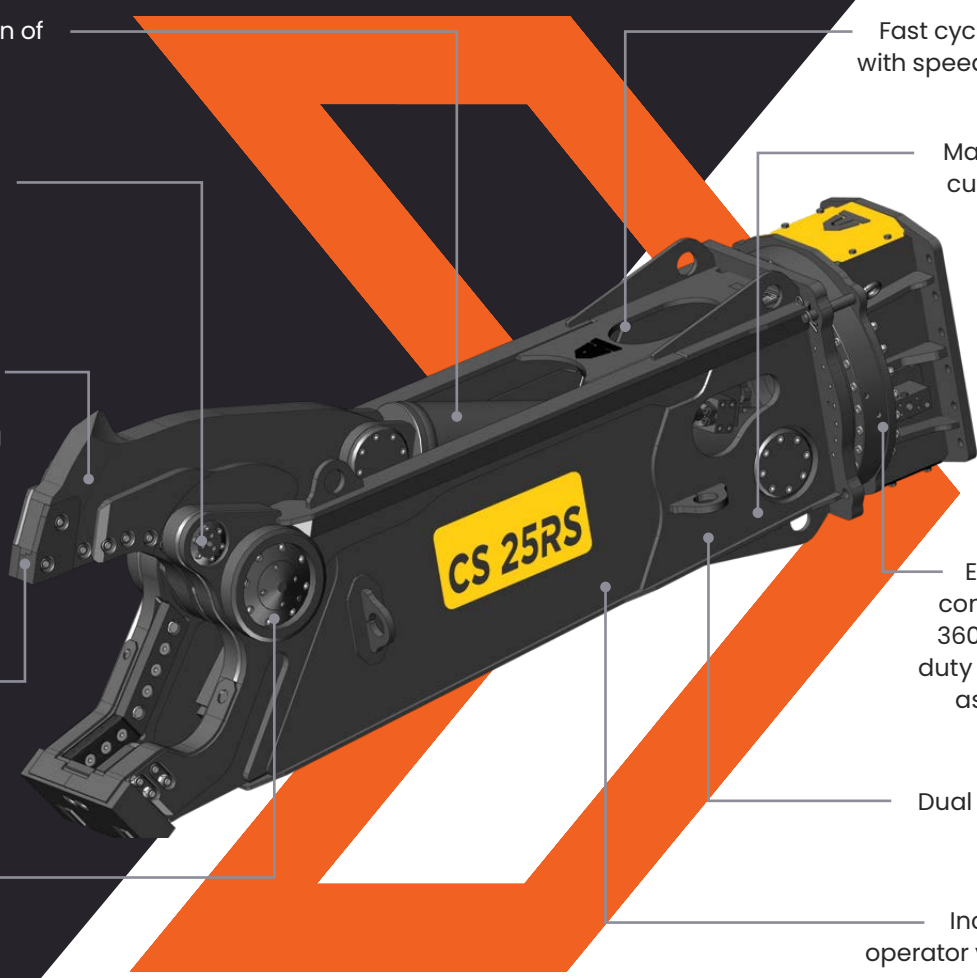
Extreme cutting force

Enclosed continuous 360° heavy duty rotation assembly

Oversized pivot assembly with protection flange

Dual rotation motors

Increased operator visibility

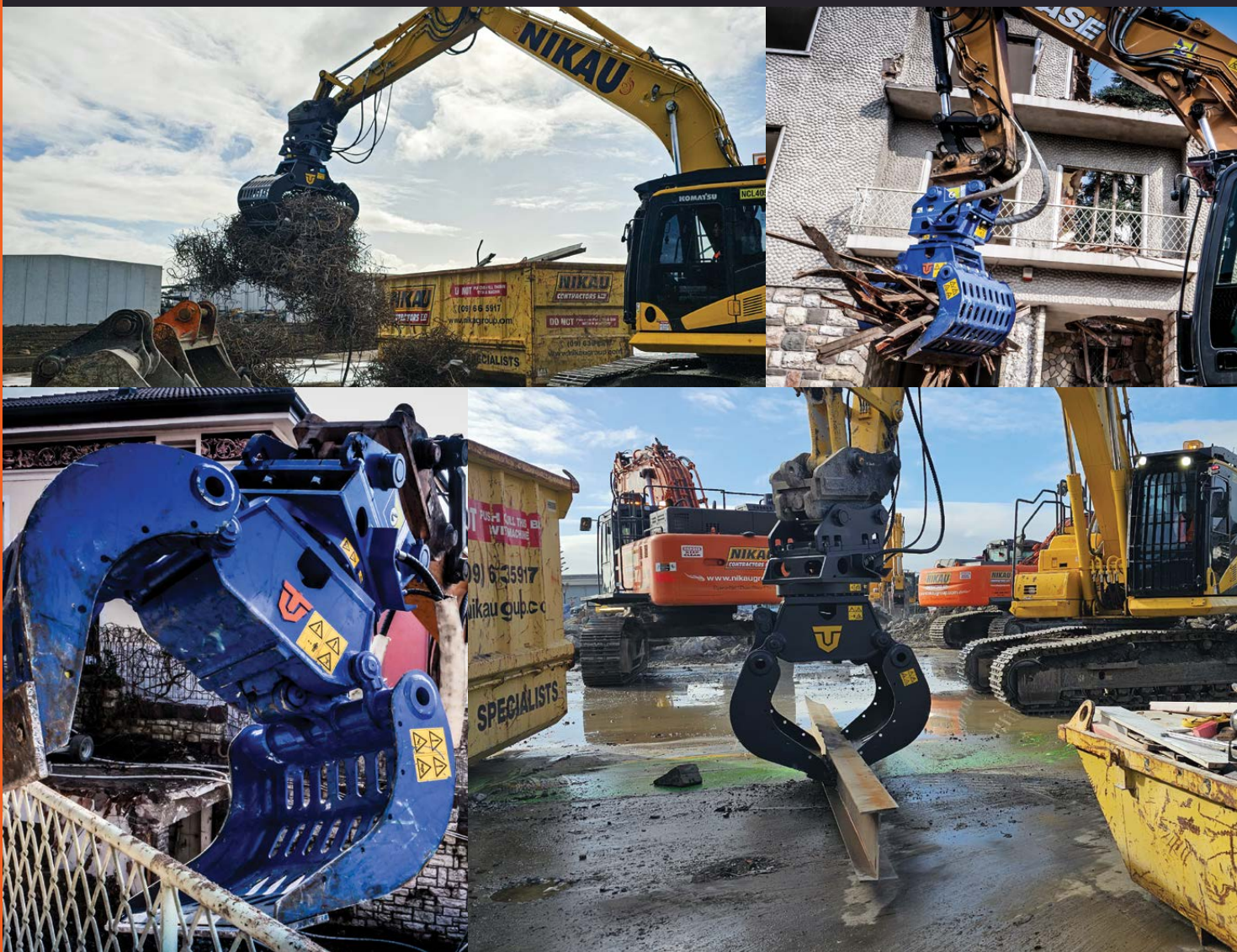


MODEL	EXCAVATOR SIZE 2ND MEMBER	EXCAVATOR SIZE 3RD MEMBER	WEIGHT	JAW OPENING	JAW DEPTH	TIP FORCE
	ton	ton	kg	mm	mm	ton
<b>CS03R</b>	2 - 3	4 - 5	300	265	230	33
<b>CS05R</b>	3 - 4	5 - 8	465	340	320	36
<b>CS07RS</b>	4 - 7	8 - 12	880	405	370	57
<b>CS12RS</b>	7 - 10	12 - 18	1,180	485	385	68
<b>CS20RS</b>	10 - 16	18 - 23	2,050	535	445	74
<b>CS25RS</b>	16 - 20	23 - 30	2,650	570	505	121
<b>CS30RS</b>	20 - 25	30 - 38	3,000	615	545	142
<b>CS40RS</b>	25 - 30	40 - 50	4,030	660	610	176
<b>CS50RS</b>	30 - 35	50 - 60	4,800	725	675	173
<b>CS55RS</b>	35 - 40	60 - 70	6,200	780	690	177
<b>CS70RS</b>	45 - 55	75 - 100	7,900	845	710	232
<b>CS100RS</b>	70 - 90	120 - 150	10,600	930	960	296
<b>CS160RS</b>	90 - 140	140 - 210	16,700	1,100	1,080	370
<b>CS180RS</b>	120 - 150	170 - 220	17,900	1,100	1,080	370
<b>CS200RS</b>	140 - 190	200 - 280	19,500	1,180	1,130	396

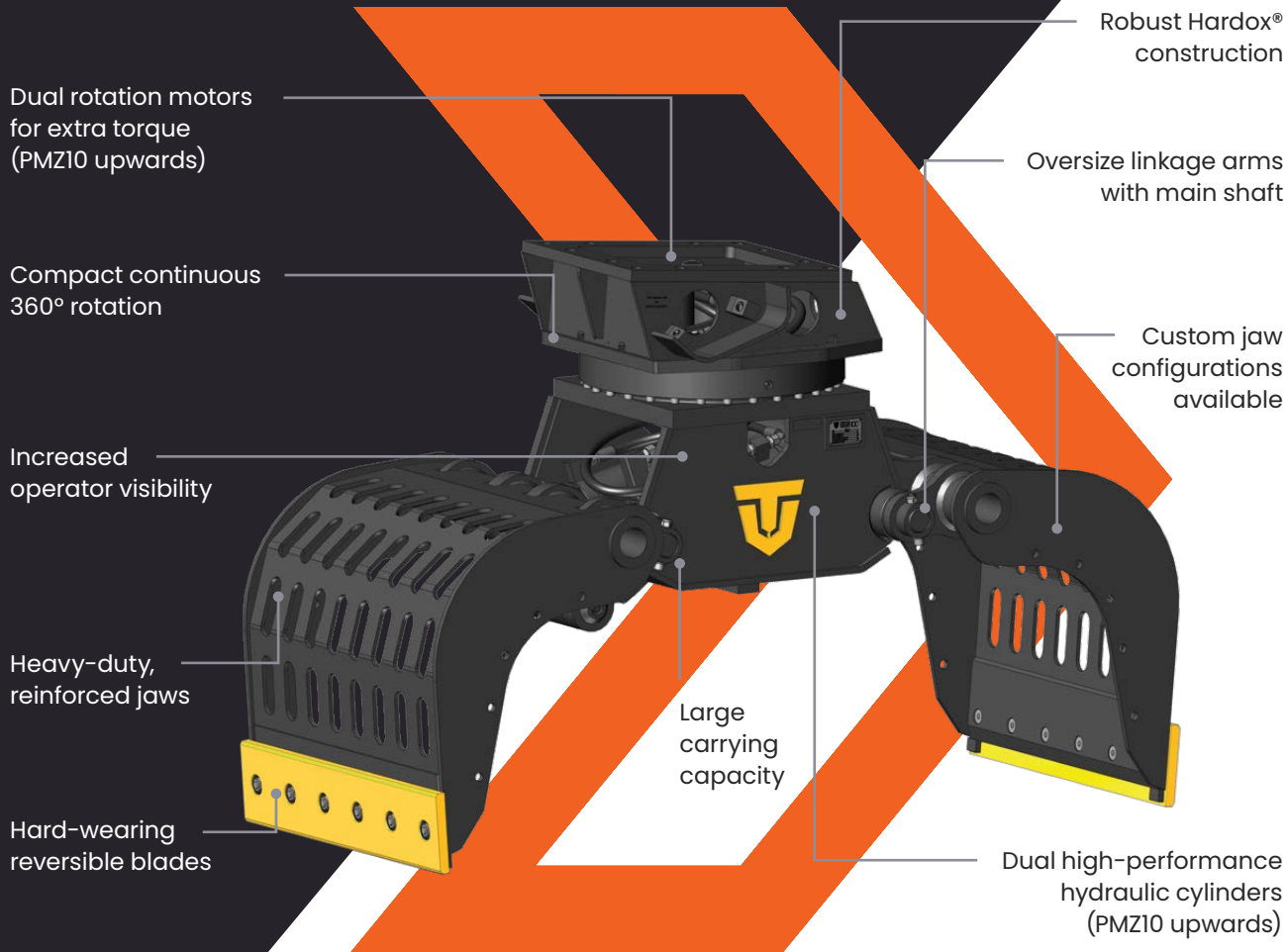
# A stronger hold on your project

## OVERVIEW

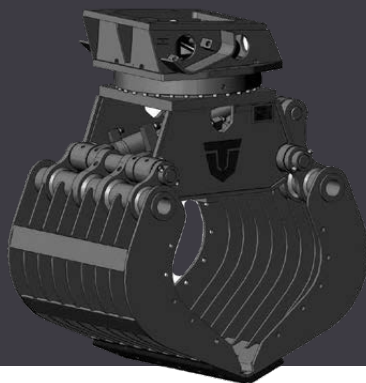
Heavy duty jobs require heavy-duty attachments and with the **Trevi Benne** range of selector grabs you can get even more out of your excavator. A versatile attachment ideal for handling stone, concrete, rubble, metal, wood and waste. Available with an opening span ranging from 800mm to 2850mm, the PMZ selector grabs are guaranteed to increase your excavator's productivity.







**AVAILABLE WITH  
RIBBED-STYLE JAWS**



MODEL	EXCAVATOR SIZE	WEIGHT	JAW OPENING	JAW WIDTH	CLOSING FORCE
	ton	kg	mm	mm	ton
PMZ02	2.5-4	140	800	450	4
PMZ05	4-6	405	1,400	600	2
PMZ08	5-10	445	1,540	700	4
PMZ09	9-15	840	1,650	800	5
PMZ10	13-18	970	1,960	800	8
PMZ12	15-21	1,040	1,960	920	8
PMZ15	17-28	1,530	2,120	1,020	11
PMZ20	24-35	1,890	2,420	1,205	14
PMZ25	28-45	2,520	2,420	1,205	21
PMZ30	35-50	2,960	2,800	1,500	22
PMZ40	45-65	3,920	2,850	1,500	23
PMZ50	50-75	4,220	3,050	1,650	25

# Tough grapples for heavy loads

### OVERVIEW

Work with increased confidence with **Bateman's** orange peel grapples. Designed to provide the highest production rate and maximum durability these grapples are built to be the toughest in the industry. With innovative designs for greater impact protection, longer life, and optimised work time, **Bateman's** grapples have been engineered to take power and precision further than ever.



Heavy-duty rotators with 360° continuous rotation, high-torque and high-capacity bearings

Rotator guarding for greater impact protection.

Double wall cylinders with fully enclosed cylinder guards and zero chrome exposure

Robust body for added durability

High abrasion-resistant tines designed with heavy duty backs and wear strips

Wide body design provides full cylinder protection

Large pin diameter and bushing

Hard faced weld-on tips

Internal hoses with full protection

Superior tine design for optimal scrap penetration



MODEL	NO. OF TINES	WEIGHT	CAPACITY	JAW OPENING
		kg	L	mm
<b>B4T16-050SC</b>	4	1,360	380	1,830
<b>B5T16-050SC</b>	5	1,590	380	1,830
<b>B4T16-075SC</b>	4	1,400	570	2,030
<b>B5T16-075SC</b>	5	1,670	570	2,030
<b>B4T16-100SC</b>	4	1,510	760	2,210
<b>B5T16-100SC</b>	5	1,770	760	2,210
<b>B4T16-125SC</b>	4	1,630	1,000	2,390
<b>B5T16-125SC</b>	5	1,920	1,000	2,390
<b>B4T16-150SC</b>	4	1,680	1,150	2,410
<b>B5T16-150SC</b>	5	1,980	1,150	2,410

# Innovative screening made simple

## OVERVIEW

The **Trevi Benne** BVR screening buckets are cutting-edge tools designed for efficient separation and sorting of materials in construction, demolition, and recycling industries. Built with robust high-strength steel and featuring interchangeable screen nets, these buckets ensure high productivity and versatility. Their powerful hydraulic drive system and easy attachment mechanism make them an essential asset for any heavy-duty material processing task.



A range of screen net sizes and materials available depending on the application

Interchangeable screen net sections for simple and cost effective maintenance

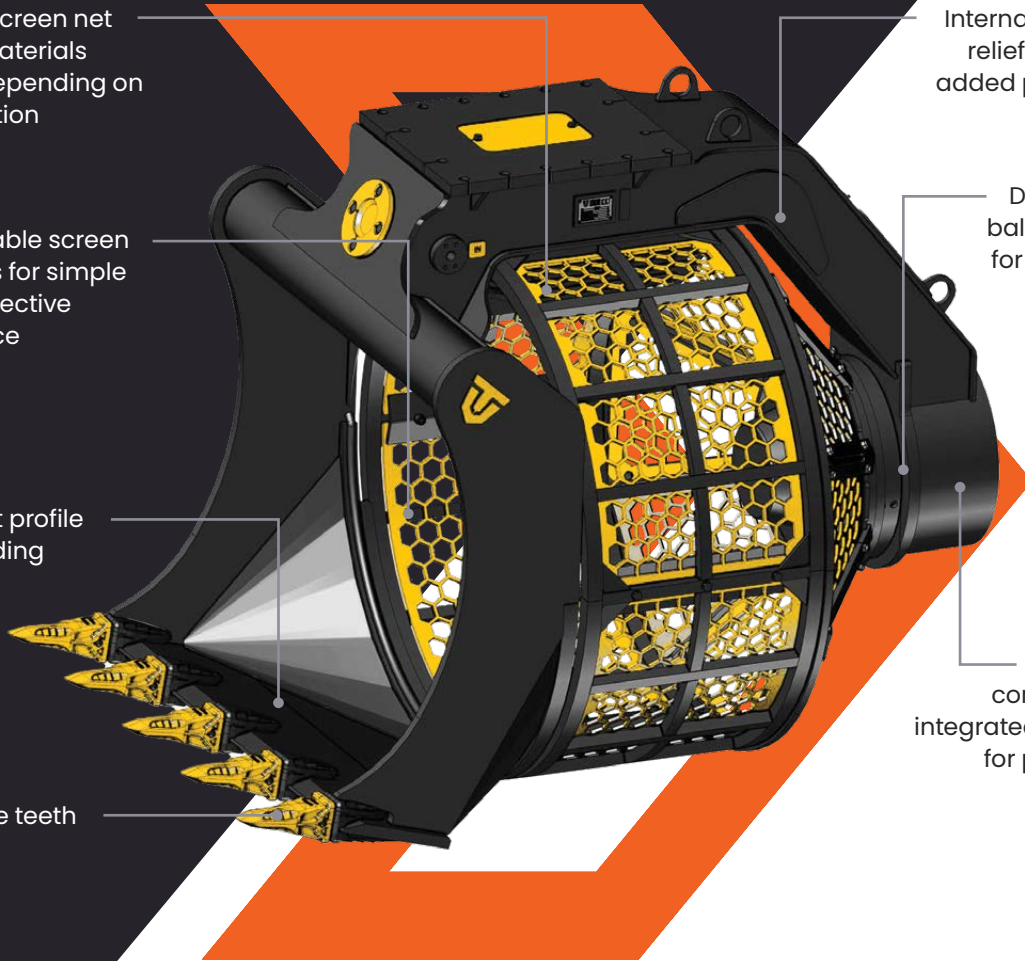
Inclined inlet profile for easy loading

Replaceable teeth

Internal pressure relief valves for added protection

Double row ball bearings for superior support

Hydraulic components integrated in frame for protection



MODEL	EXCAVATOR SIZE	WEIGHT	CAPACITY	SPEED
	ton	kg	L	RPM
<b>BVR05</b>	1.5 - 2.5	110	200	24 - 32
<b>BVR07</b>	3 - 5	250	300	18 - 24
<b>BVR08</b>	5 - 8	350	500	18 - 24
<b>BVR09</b>	8 - 12	690	700	18 - 24
<b>BVR12</b>	13 - 16	1,320	1,300	18 - 35
<b>BVR14</b>	17 - 21	1,570	1,700	18 - 35
<b>BVR15</b>	22 - 30	1,810	2,100	18 - 35
<b>BVR19</b>	31 - 40	2,550	2,800	18 - 35
<b>BVR25</b>	41 - 55	4,900	5,300	18 - 27

# Mobile magnet power

### OVERVIEW

Our hydraulic-driven lifting magnets are a complete all-in-one unit with an integrated magnet generator. An ideal attachment for demolition and recycling contractors turning their scrap metal into profit. Increase your productivity with a true plug-and-play magnet, ready to be used straight from the box in any application.



Plug-and-play unit while using excavator auxiliary hydraulics

Switch between machines quickly and easily

World's fastest demagnetising time

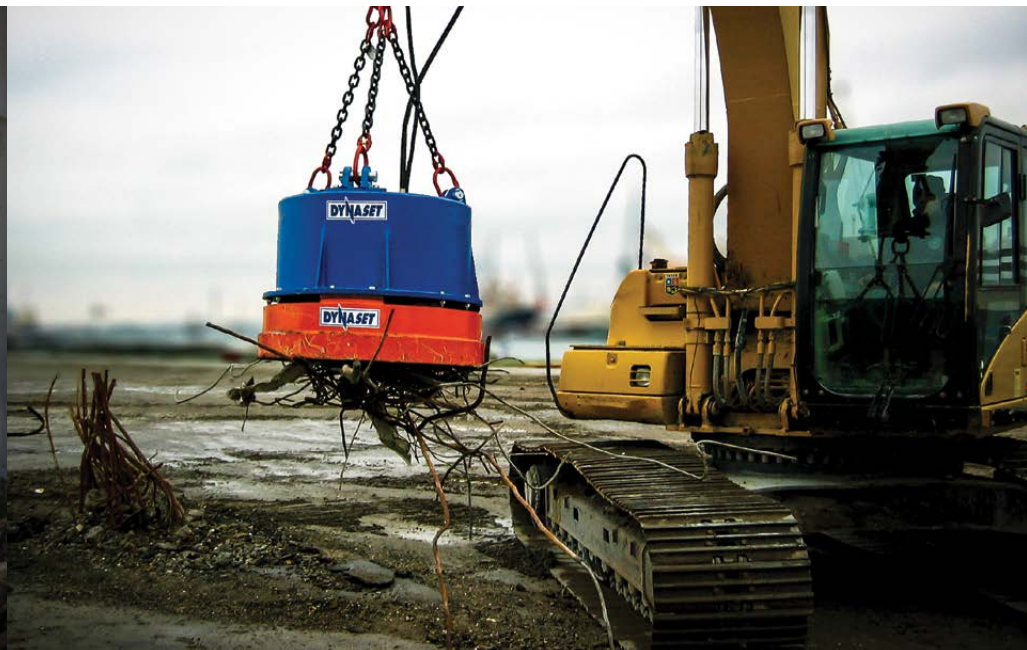
No external electric cable

Optional sorting claws

Available with quick hitch or lifting chains

Fully protected hydraulic generator stored internally

Integrated hydraulic control valves



MODEL	EXCAVATOR SIZE	WEIGHT	DIAMETER	LIFTING CAPACITY - SLABS	LIFTING CAPACITY - SCRAP
	ton	kg	mm	kg	kg
<b>HMAG PRO 700</b>	5 +	450	750	2,700	70
<b>HMAG PRO 900</b>	10 +	900	960	5,250	190
<b>HMAG PRO 1200</b>	18 +	1,550	1,260	7,500	360
<b>HMAG PRO 1400</b>	20 +	2,100	1,450	9,000	510

# High performance, compact design

## OVERVIEW

Our hydraulic-driven magnet generators provide a stable and reliable source of electricity for any lifting magnet. A complete turnkey package when coupled with our priority valve system, which ensures a stable electrical current is sent to the magnet. Guaranteed to increase your productivity with the world's fastest demagnetising time of 0.8 seconds when combined with one of our lifting magnets.





Compact design with the world's best power-to-size ratio

Maintenance-free design

World's fastest demagnetising time of 0.8 seconds

Digital screen to provide generator operating status

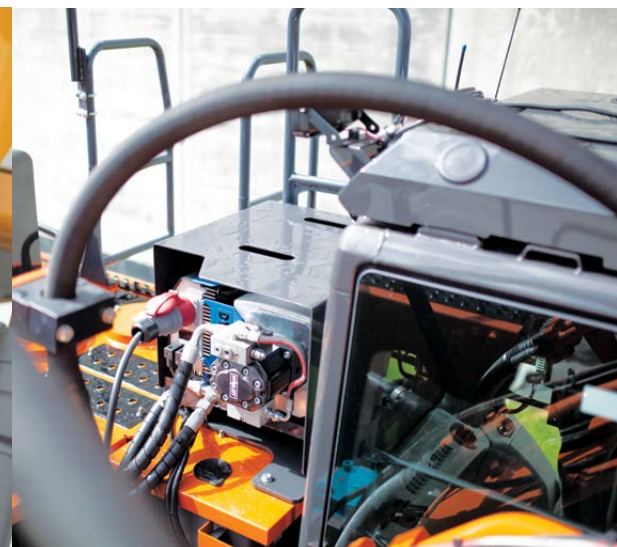
Can be controlled either electrically or hydraulically



Durable construction with weatherproof housing

A patented RPM control valve ensures constant power frequency

Silent, efficient hydraulic motor



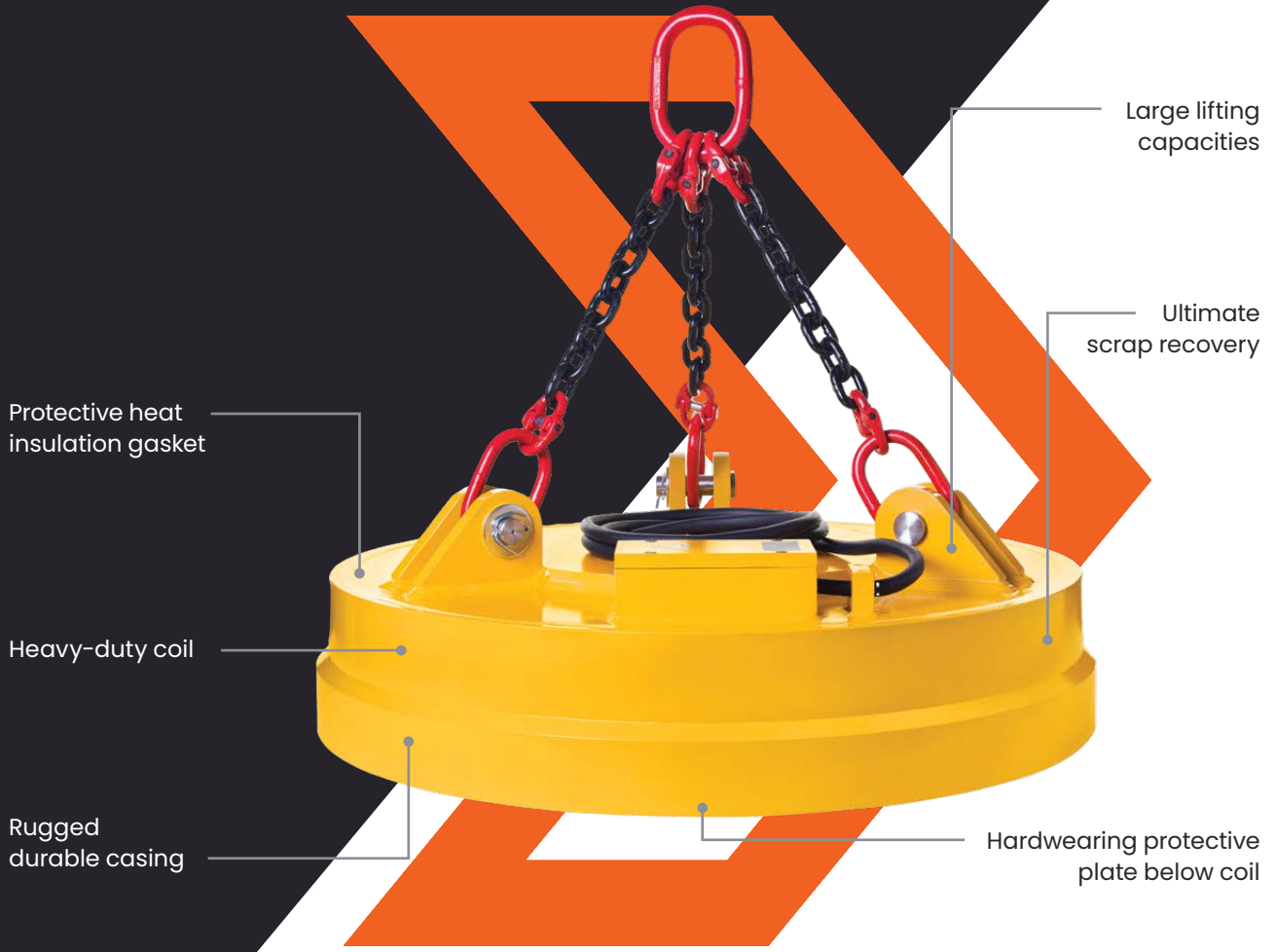
MODEL	WEIGHT	MAGNET VOLTAGE	MAX MAGNET POWER	MIN HYDRAULIC FLOW	HYDRAULIC PRESSURE
	kg	VDC	kW	l/min	bar
<b>HMG PRO 3kW</b>	34	220	3	21	200
<b>HMG PRO 6kW</b>	52	220	5.5	32	160
<b>HMG PRO 10kW</b>	74	220	9.1	44	215
<b>HMG PRO 15kW</b>	76	220	14.5	68	230
<b>HMG PRO 20kW</b>	114	220	19.5	100	180
<b>HMG PRO 30kW</b>	190	220	29.5	112	230
<b>HMG PRO 40kW</b>	190	220	39.5	112	300

# Turning scrap into profit

## OVERVIEW

We have a large range of standalone lifting magnets available for all applications. Commonly used in the recycling and steel manufacturing industries, our magnets are the ultimate attachment for material handlers and excavators. With the ability to turn scrap into profit these magnets are a must for operators that want to speed up their operation while minimising waste.





Protective heat insulation gasket

Heavy-duty coil

Rugged durable casing

Large lifting capacities

Ultimate scrap recovery

Hardwearing protective plate below coil

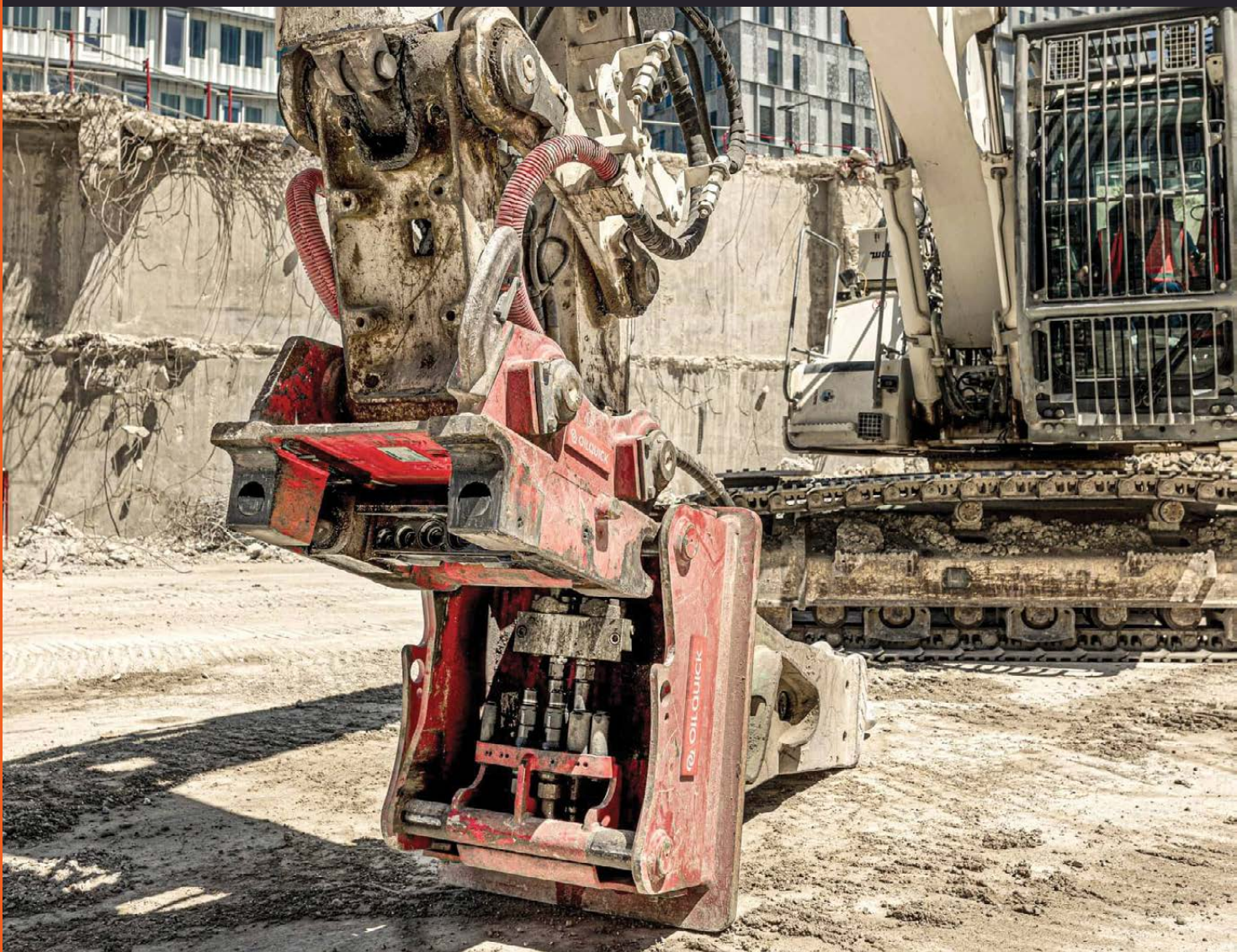


MODEL	WEIGHT	DIAMETER	ABSORBED POWER	LIFTING CAPACITY - SLABS	LIFTING CAPACITY - SCRAP
	kg	mm	kW	kg	kg
ESM75	400	750	2.8	3,000	110
ESM80	500	800	3	3,600	130
ESM95	710	950	5	5,000	175
ESM105	840	1,050	6	5,500	230
ESM110	950	1,130	7	6,250	270
ESM125	1,300	1,250	8	7,000	340
ESM145	1,750	1,450	10	10,000	530
ESM150	2,150	1,500	12	10,500	550
ESM160	2,700	1,610	15	11,500	570
ESM190	3,800	1,900	20	22,500	750

# Integrated hydraulic performance

## OVERVIEW

Boasting the world's most popular and advanced fully automatic quick coupler system. These quick couplers fully integrate hydraulic connections between machine and attachment, massively increasing productivity on the job site.



Protected hose routing on machine and attachments

Switch hydraulic attachments in seconds

Automatically connect hydraulic connections

Heavy-duty welded construction

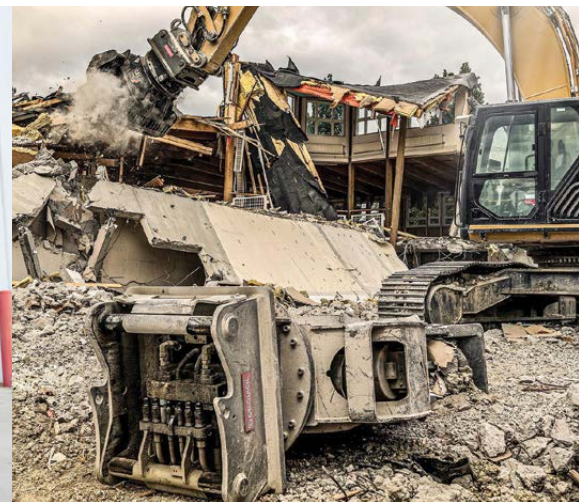
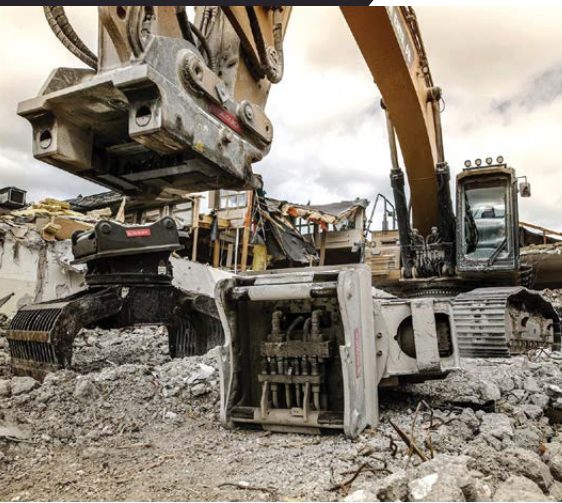
Increased safety, productivity and profitability

Compact profile maximises breakout force

Safety locking sensors and system

Eliminates oil leaks

Optional 17-pin electrical connector

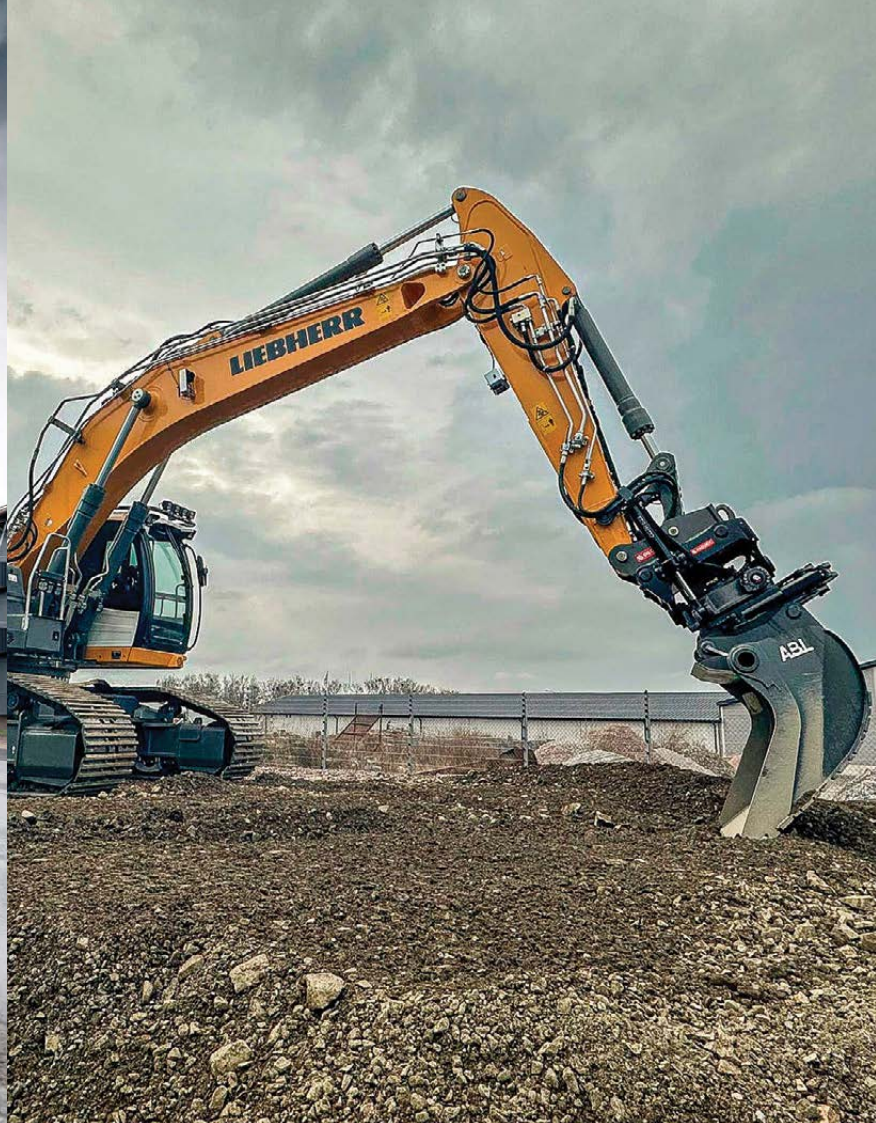


MODEL	EXCAVATOR SIZE	WEIGHT	HYDRAULIC COUPLERS	PIN CENTRES	WIDTH
	ton	kg		mm	mm
<b>OQ40</b>	1 - 5	32	2 x 3/8" & 2 x 1/2"	300	240
<b>OQ45</b>	5 - 12	85	3 x 3/8" & 2 x 1/2"	430	290
<b>OQ60</b>	8 - 18	135	2 x 3/8", 1 x 1/2" & 2 x 3/4"	480	340
<b>OQ65</b>	14 - 22	170	2 x 3/8" & 3 x 3/4"	530	440
<b>OQ70</b>	15 - 28	210	2 x 1/2", 1 x 3/4" & 2 x 1"	600	450
<b>OQ70-55</b>	18 - 32	230	2 x 1/2", 2 x 3/4" & 2 x 1"	600	550
<b>OQ80</b>	24 - 43	320	2 x 1/2", 2 x 3/4" & 2 x 1"	670	590
<b>OQ90</b>	40 - 70	630	3 x 1/2", 1 x 3/4" & 4 x 1"	750	750
<b>OQ120</b>	70 - 120	1,200	3 x 1/2", 3 x 1" & 2 x 1 1/2"	925	870

# The flexible hydraulic multi-tasker

## OVERVIEW

The **OilQuick** Tiltrotator is a hydraulic joint that turns an excavator into a flexible and capable multi-tasker. By integrating the automatic quick coupler technology, it can not only rotate and tilt but also rapidly couple the right hydraulic attachment for the job.



Dual high-performance tilt hydraulic cylinders

Achieve more from a single location on site

Compact continuous 360° rotation

Compact design for maximum breakout force

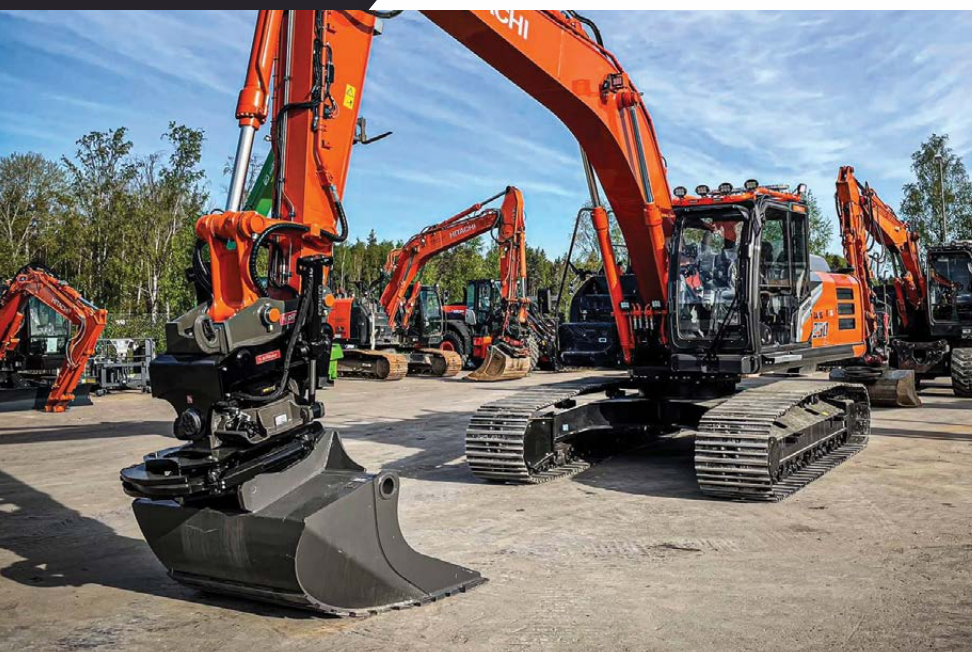
Optional gripper for added functionality

Heavy duty construction for added durability

Sandwich design allows tiltrotator to be removed in seconds

Up to 35% increased productivity

Integrated hydraulic couplers for instant hydraulic attachment connection



**MODEL**

**EXCAVATOR SIZE**

**WEIGHT**

	ton	kg
<b>OQTR-E09</b>	6 - 9	460
<b>OQTR-E14</b>	9 - 14	470
<b>OQTR-E19</b>	14 - 19	600
<b>OQTR-E26</b>	19 - 26	840
<b>OQTR-E33</b>	24 - 33	1,040

# For an all-in-one deep clean

## OVERVIEW

Increase your capabilities and productivity by using our state-of-the-art high-pressure street washers. High-pressure water digs dust and sand out from the pores in asphalt, concrete and similar surfaces. Compact size, lightweight and low water consumption make our unit a cost-saving and work efficient solution.





Includes a washing gun

Low water consumption hydraulic powered water blaster

Hydraulic water blaster can run dry and self primes

High-pressure washing head

Washing head moves horizontally and tilts

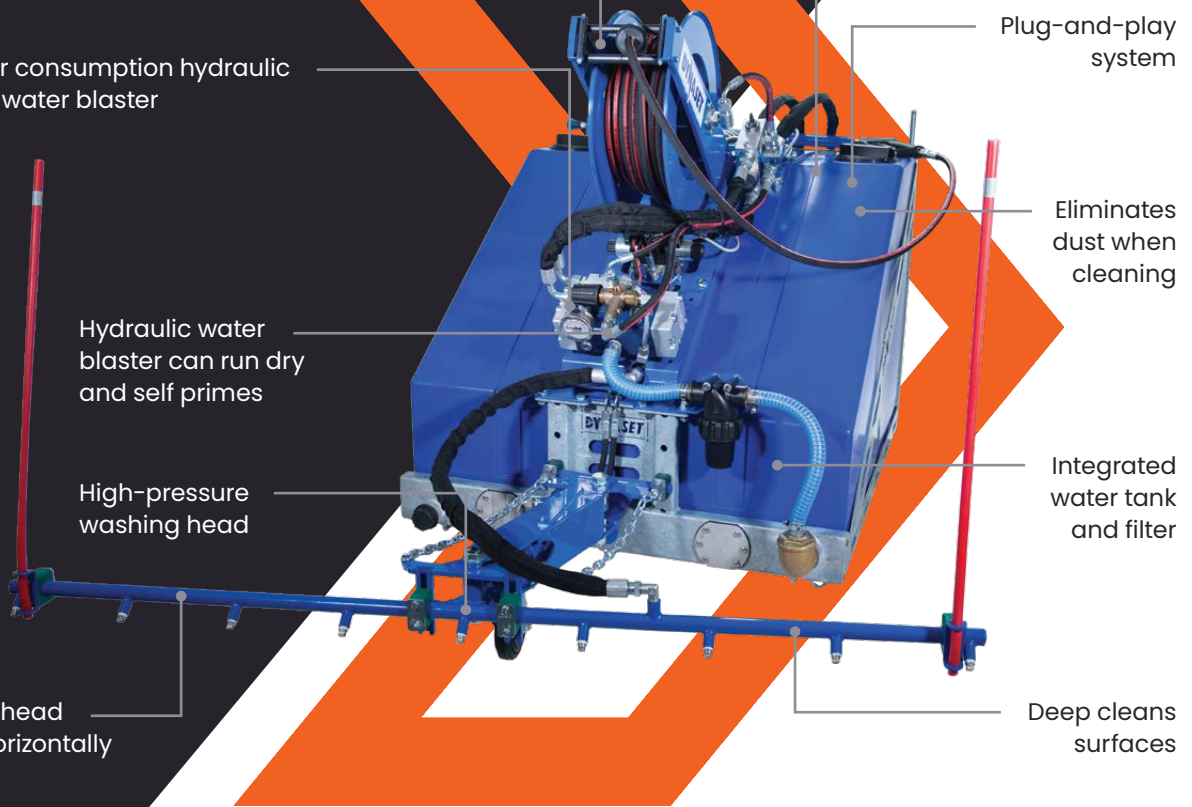
Attach to mobile machinery

Plug-and-play system

Eliminates dust when cleaning

Integrated water tank and filter

Deep cleans surfaces



MODEL	WEIGHT	WORKING WIDTH	WATER TANK	WATER FLOW	WATER PRESSURE
	kg	mm	l	l/min	bar / psi
<b>KPL-S-250</b>	80	1250	270	30	250 / 3650
<b>KPL-M-250</b>	212	1,650	540	30	250 / 3650
<b>KPL-L-250</b>	215	1,650	810	30	250 / 3650
<b>KPL-L-220</b>	225	1,850	810	50	220 / 3,200
<b>KPL-XL-220</b>	302	2,200	1080	50	220 / 3,200
<b>KPL-XL-180</b>	312	2,200	1080	90	180 / 2,600

# Powerful pumping, reliable performance

## OVERVIEW

**Dynaset** hydraulic submersible pumps have a higher efficiency and a better power-to-size ratio compared to traditional electric pumps, increasing productivity and in turn increasing profits. A compact size with a rugged and durable design make these the perfect attachment for any mobile machine such as excavators, tractors and other earthmoving machinery.



High performance with excellent power-to-size ratio

Hydraulic power removes the need for electricity and eliminates any risk of electric shock

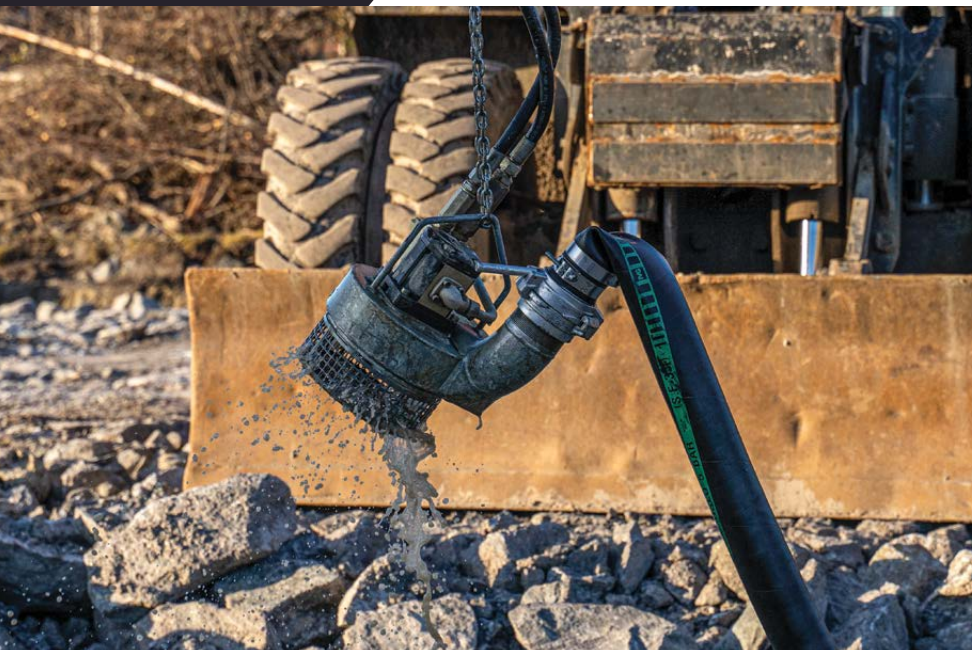
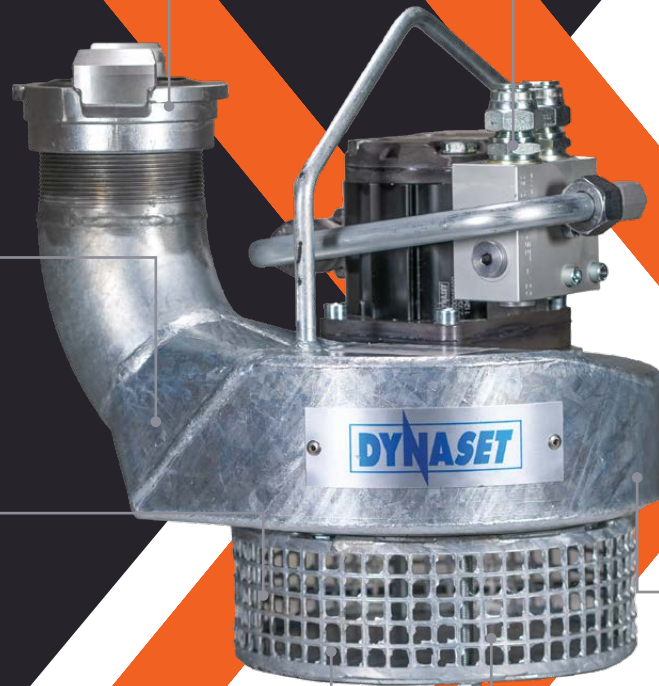
A lightweight and compact design allows for access to confined spaces like pile holes

Removable grate for simple maintenance or cleaning

Mesh grate to prevent debris from blocking the pump

Rugged design, with low maintenance and no wearing parts

Pump impeller constructed from Hardox®

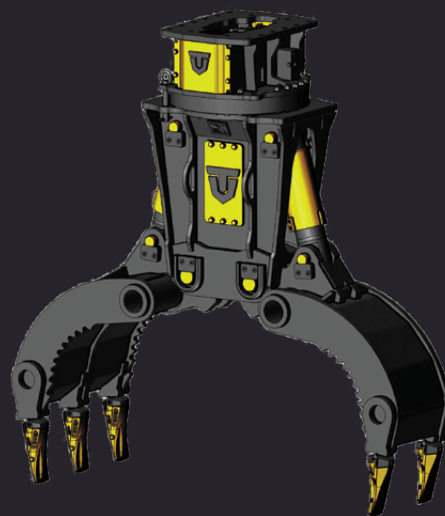


MODEL	DIAMETER	WEIGHT	DISCHARGE FLOW (5M HEAD)	MAX HEAD	OUTLET CONNECTION
	mm	kg	l/min	m	
<b>HSP900</b>	141	5.2	900	21	2"
<b>HSP3000</b>	304	13	3,000	50	3"
<b>HSP6500</b>	477	39	6,500	50	5"
<b>HSP8500</b>	573	51	8,500	40	6"

## Other Products



**Mechanical  
Pulverizers**



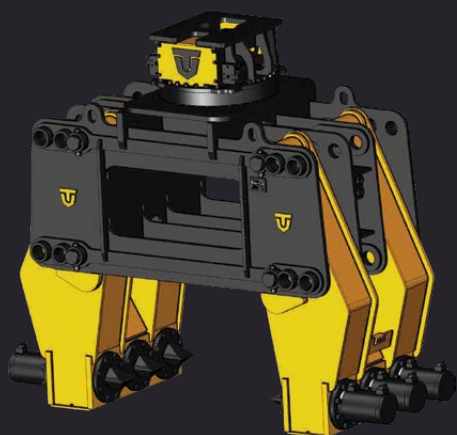
**Handling Grabs**



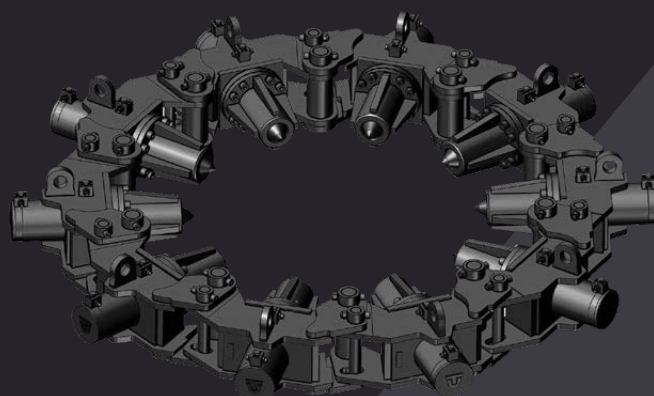
**Dismantlers**



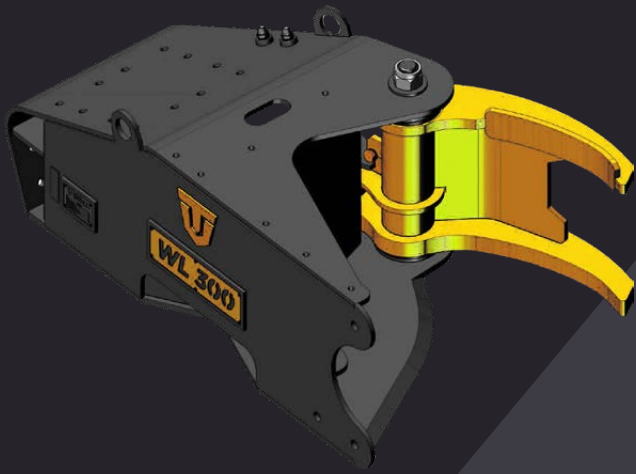
**Rail Breakers**



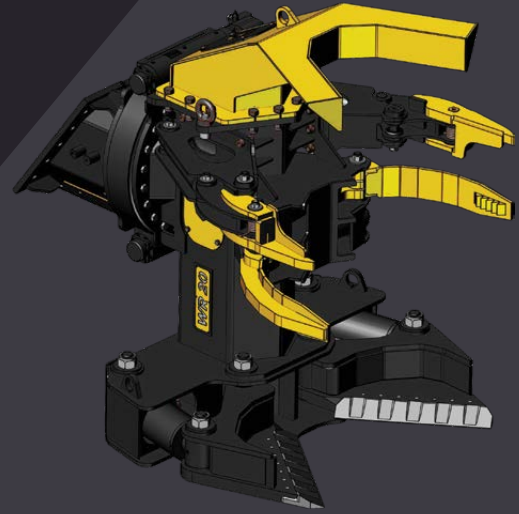
**Diaphragm Pile  
Crushers**



**Pile Breakers**



**Tree Shears**



**Rotating Tree Shears**



**Stump Cutters**



**Wood Splitters**



**Vacuum Bucket**



**Magnet Grapples**



Equipment solutions to equip your  
business for success

Land and sea, quarry or road, building or demolition site, we're proud to bring our customers a range of solutions and products to improve the efficiency and effectiveness of either a full fleet of vehicles or a single machine. These solutions are backed by genuine support and industry expertise from our passionate and qualified team.

**Turning power into progress.**

**0800 33 66 39 > [enquiries@fennex.co.nz](mailto:enquiries@fennex.co.nz) > [fennex.co.nz](http://fennex.co.nz)**